

**पावर ग्रिड कारपोरेशन ऑफ इंडिया लिमिटेड / POWER GRID CORPORATION OF INDIA LTD.**

**STATUS OF 400/220KV NP KUNTA SUBSTATION**

As on 29.02.2016

Sl. No.	Name of Work	Present Status	Remarks
<b>1</b>	<b>Site Package</b>		
i)	<b>Construction Power</b>	<b>For 33KV Supply :</b> (i) 33kV Poles with a 4 pole structure has been erected upto POWERGRID SS. Providing of 33KV supply to be expedited. <b>11KV Supply :</b> i) Transformer energised.	
ii)	<b>Site Levelling</b> Agency: M/s R P Projects Pvt. Ltd., Hyderabad	<b>Completed.</b>	
iii)	<b>Boundary Wall :</b> M/s.Kasukurti Sujatha Constructions Pvt. Ltd., Hyderabad	Awared on 22.07.15 Work commenced Panels : 3615/4800 completed Columns : 803/803Nos. completed	
<b>2</b>	<b>Subsation main Package :</b> Agency: Megha Engineering & Infrstructure Ltd., Hyderabad. Awarded on : 13.05.2015	i) <b>Tower Foundations- 400KV &amp; 220KV :</b> All Completed ii) <b>Equipment Foundations (400KV and 220KV ) -</b> Completed iii) <b>Lattice Structure Erection (400KV, 220KV &amp; LM):</b> Erection Completed iv) <b>400KV/220KV :</b> Equipment structures erection 330/582 done sofar balance erection in progress. v) <b>400KV/220KV :</b> Equipmentserection: 119/278 done sofar balance erection in progress. vi) 13/37 Control & Relay panels erercted. vii) <b>Cable Trench :</b> Sec 1-1 : 260/260Mtr., Sce.2-2 : 540/540 Mtr. & Sec.3-3 :300/300Mtr. wall completed viii) <b>Cable Laying :</b> 15/135Km Completed.	

		<p>iv) <b>Control Room:</b> Internal trenching, plastering and flooring works are in progress.</p> <p>v) <b>Switchyard Panel Rooms 400KV:</b> All Civil works completed.</p> <p>works completed. Plastering and internal trench works in progress</p> <p><b>220KV :</b> 2/2Nos. roof slab &amp; Brick work completed. Plastering and internal trench works in progress</p> <p>vi) <b>Fire Fighting Pump House :</b> Roof slab casted &amp; Brick work and Equipment Foundations completed. Firefighting Tank casting in progress.</p> <p>v) <b>DG set :</b> Foundation completed.</p>	
		<p><b>Supply:</b> Lattice structures for 400KV Towers &amp; LM towers,</p> <p><b>400KV:</b> All Isolators,, CTs, CVTs, BPIs, Surge arresters, 10/11 CBs and Erection Hardware supplied.</p> <p><b>220KV:</b> CTs, CVTs, CBs, Isolators, BPIs, Surge Arresters and Erection Hardware supplied 13/37Nos. 400/220KV Relay panels supplied</p>	
<b>3</b>	<p><b>Transformers &amp; Reactors Package :</b> Agency : M/s.Crompton Greaves Ltd (CGL) Awarded on : 24.06.2015</p>	<p>i) <b>Transformer Foundation :</b> For main Block 3/3 2nd Lift and up to rail fixing 3/3 completed. Fire wall and Cooler bank pedestals work in progress.</p> <p>ii) <b>Bus Reactor Foundation:</b> Foundations completed and Cooler bank pedestals work in progress</p>	
<b>4</b>	<p><b>Tower Package - LILO of Kadapa-Kolar 400KV S/C Line at NP Kunta SS</b> Agency : M/s.K Ramachandra Rao Transmission &amp; Projects Pvt Ltd Awarded on : 15.06.2015</p>	<p>i) Tower Foundations : <b>Completed</b></p> <p>ii) Tower Erection : 28/32 Done</p> <p>iii) Stringing : 6.8/9.5Km completed.</p>	<b>All the Tower foundations completed</b>

**Critical Issues :**

**1)** Powergrid requested for purchase of land for Substation instead of lease. Being expedited in State Government.

# POWER GRID CORPORATION OF INDIA LIMITED

EQUIPMENT ERECTION IN PROGRESS IN SWITCHYARD AT NP KUNTA 400/220KV SS

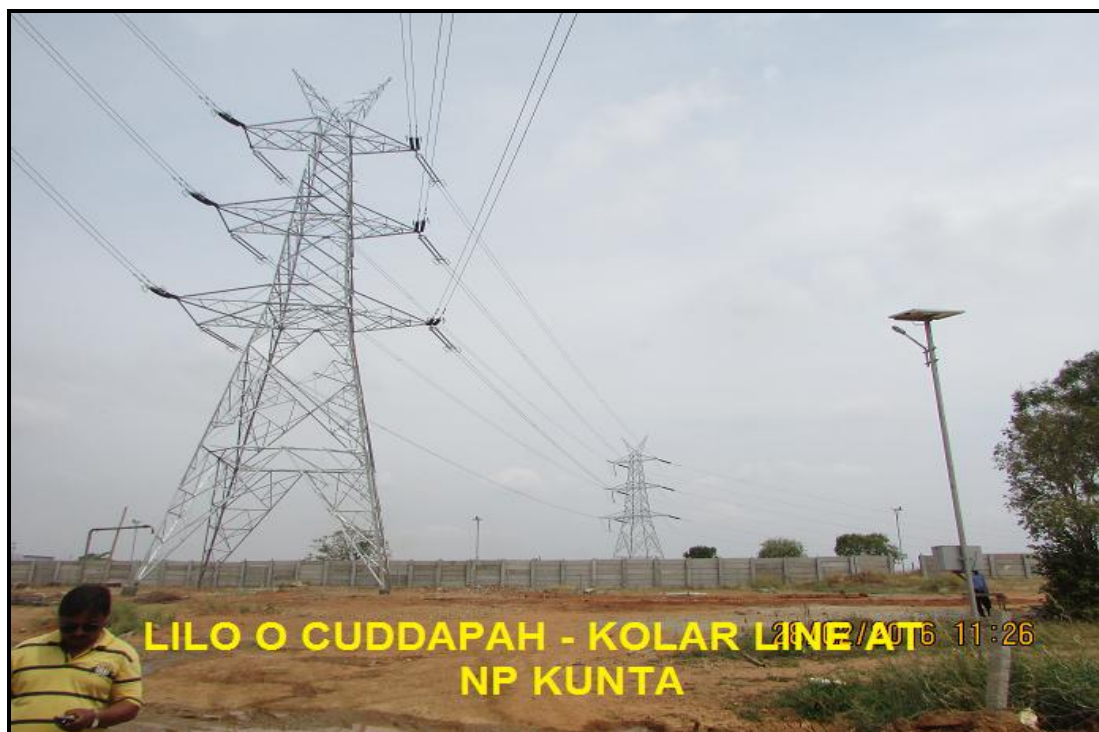


**ACDB ROOM - NP KUNTA 400/220KV SS**



**FIRE FIGHTING PUMP HOUSE**





**TERMINAL TOWER OF LILO OF CUDDAPAH – KOLAR LINE AT NP KUNTA 400/220KV SS**